

The Still & Sanguine: Stitches by Morii

bougainvillea
the creative veranda

x

Tao
The way to Art

The hand embroidery technique has been a long-standing one in the Indian tradition. Primarily used to create intricate, heavy patterns on clothing and other interior accessories, the forms depicted usually follow a set pattern of motifs. Today with the advent of machines, it is a slowly dying art form, invested in by a few.

Brinda, through her brand *Morii* emphasizes upon the ‘art’ in this technique, harnessing women artisans to create fluid abstract landscapes. Her vision is inspired by nature and its subtle, often unnoticed movements through wind and water. The colors used and patterns stitched are calming and joyful to experience with the technique becoming a means of deeper expression. There is much power in its minimalism as each work stands complete, leaving the viewer with a sense of peace and introspection. Brinda says, *“through my art I aim to create embroidery that transcends its traditional roots, producing visually striking pieces that embody the spirit of abstract painting.”*

With this unique collaboration between her vision and the women artisans bringing it to life, we see a beautiful narrative of creativity and community unfold.

There is evolution in the stillness and philosophy in the sanguine.

Sanjana Shah

Haya Siras

Sujni Hand Embroidery

43.5" x 33.5"

INR 1,00,000 /-



Tavish

Rabari Hand Embroidery

43" x 28"

INR 95,000 /-



Mahalaya

Rabari Hand Embroidery

over Patchwork

46" x 42"

INR 1,20,000 /-

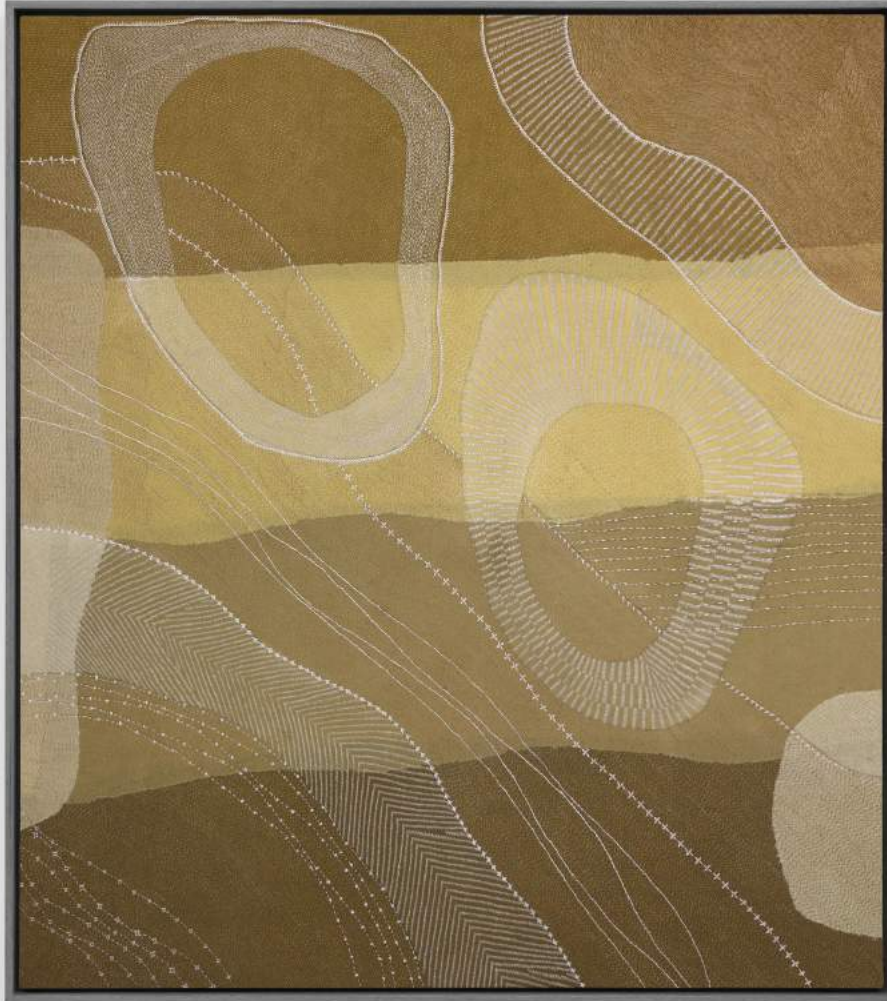


Hiishima

Rabari Embroidery
on Sujni

45" x 40"

INR 1,25,000 /-

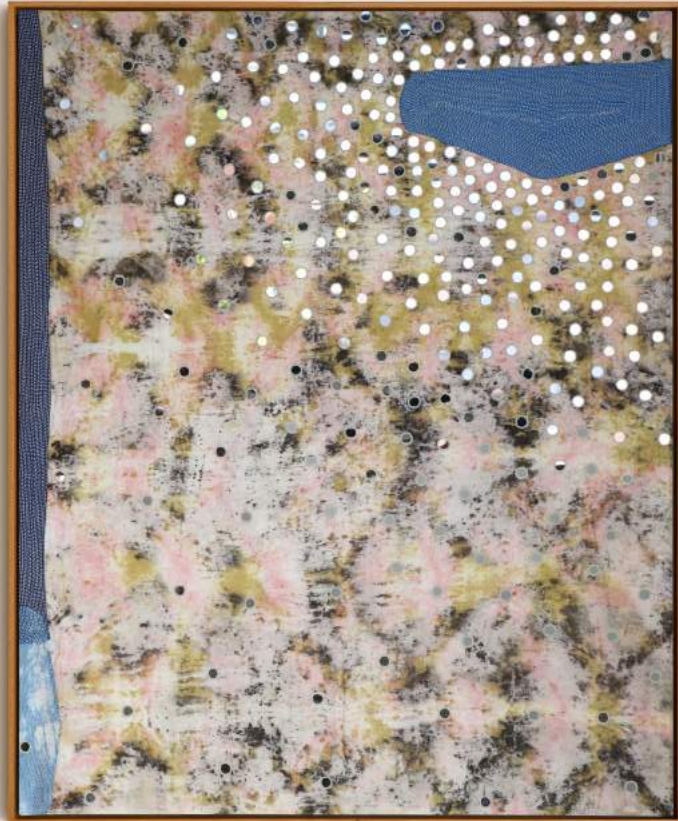


Puspavrasti

Rabari Hand Embroidery
and Mirror Work

54" x 44"

INR 1,40,000 /-



Kubera

Sujni Hand Embroidery
over Patchwork

50" x 25"

INR 1,00,000 /-

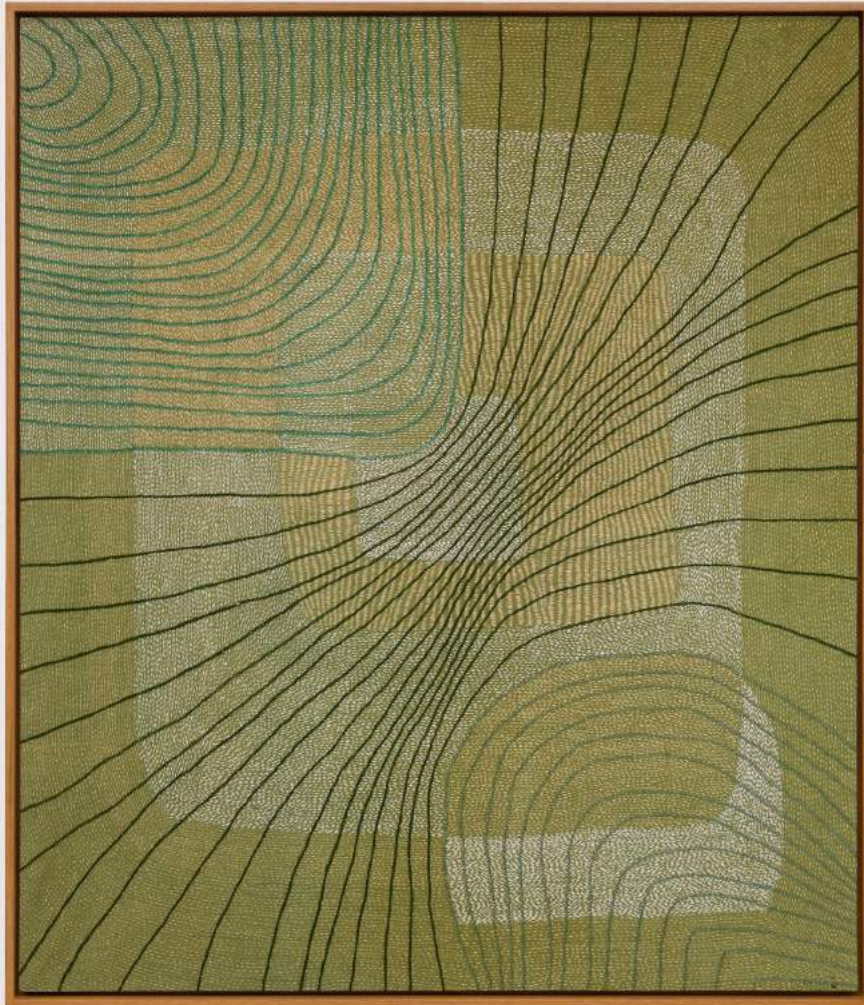


Angkor

Rabari Hand Embroidery
over Sujni Embroidery

43" x 37"

INR 1,15,000 /-



Samyana: Travelling a Journey

Rabari and Sujni
Hand Embroidery
on a Patchwork
of Natural Dyed
Silk Fabrics



42" x 78"

INR 2,10,000 /-

Majhi

Rabari Hand Embroidery

42" x 26"

INR 75,000 /-



Nandanvan

Rabari Hand Embroidery
on Sujni with Base Patchwork
of Eco-Print and
Natural Dyed Fabrics



43" x 43.5"

INR 1,25,000 /-

Prantara: Forest

Sujni Hand
Embroidery



43" x 77"

INR 2,00,000 /-

Nisargh

Sujni Hand Embroidery

22" x 30"

INR 45,000 /-



Nunaat

Rabari Hand Embroidery

20" x 24"

INR 55,000 /-



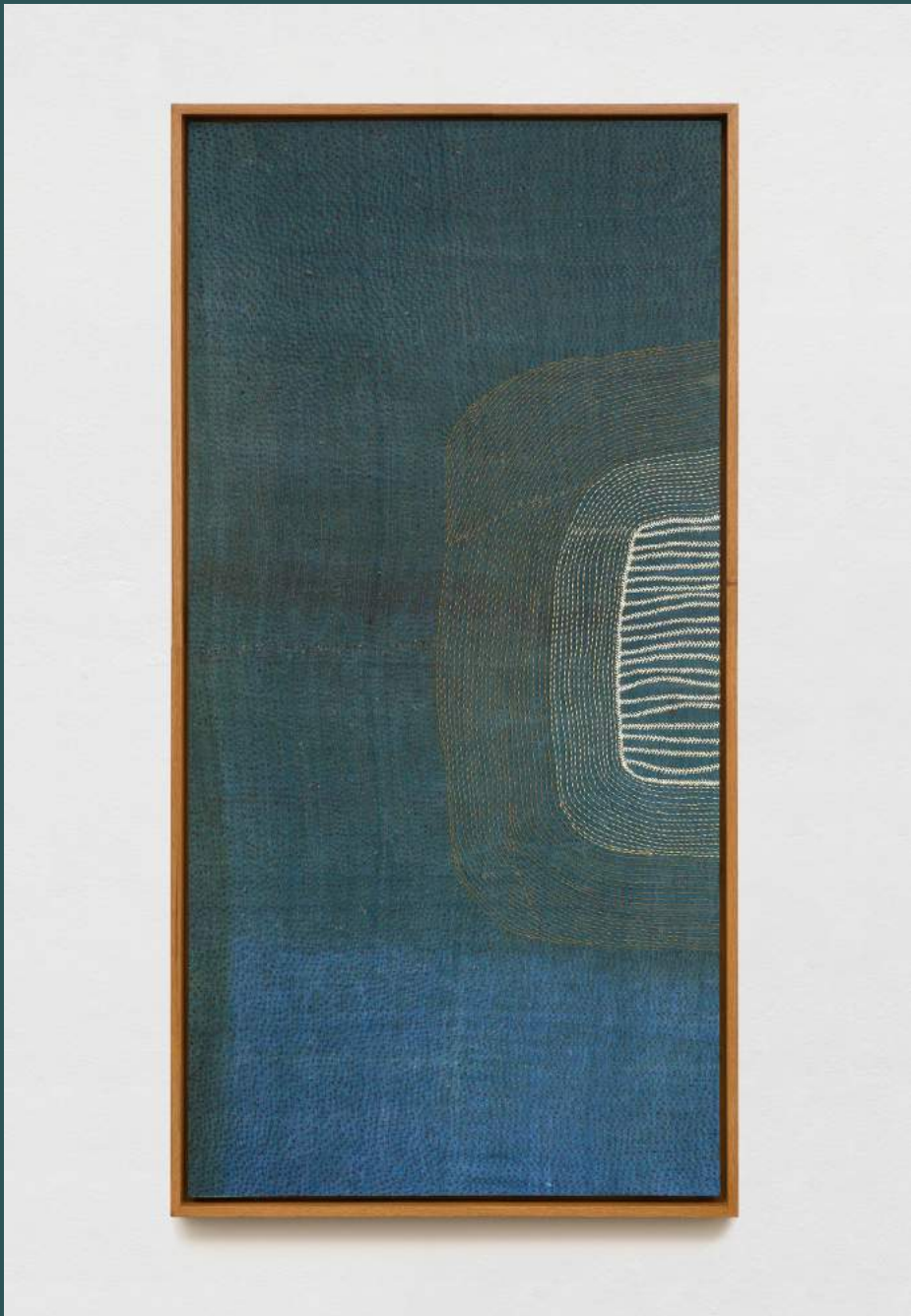
Vatagamana: One Who Flies Through the Trees

Sujni Hand
Embroidery
on Patchwork

42" x 69"

INR 1,80,000 /-





Barman

Rabari Hand Embroidery

42" x 20"

INR 65,000 /-

Tapas: Severe Meditation

Rabari Hand Embroidery
over Patchwork

28" x 42"

INR 75,000 /-



Maheshwar

Rabari Hand Embroidery

42" x 20"

INR 65,000 /-



Baraha: Feathers from the Tail of a Peacock

Sujni Hand Embroidery

on Patchwork

44" x 50"

INR 1,40,000 /-



Rayujin

Sujni Hand Embroidery

41" x 65"

INR 1,60,000 /-

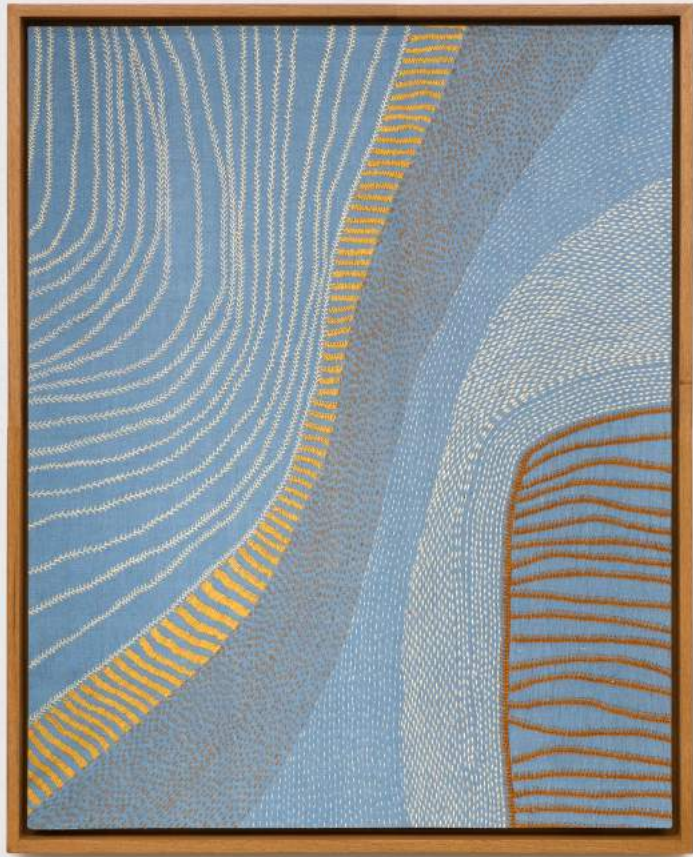


Vrttaka

Rabari Hand Embroidery

25" x 20"

INR 45,000 /-



Jagaccitra: Wonder of the Universe

Sujni Hand

Embroidery

43" x 71"

INR 2,00,000 /-



Sthapthy

Sujni Hand Embroidery

41.5" x 33"

INR 80,000 /-

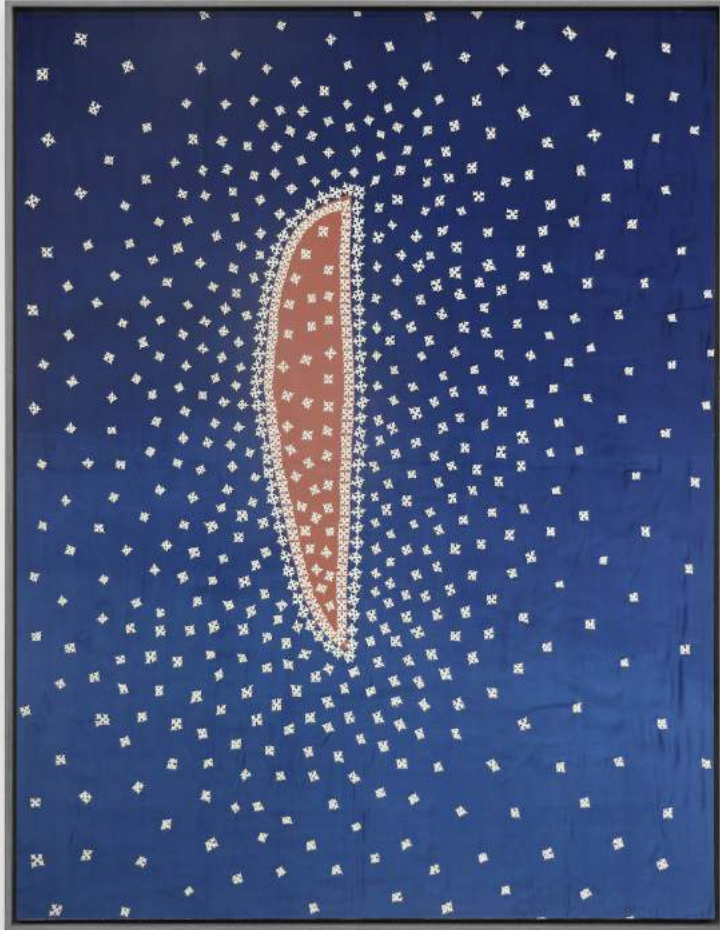


Hiranyagarbha

Rabari Hand Embroidery

53" x 41.5"

INR 1,30,000 /-



Sagavassi

Rabari Hand Embroidery
on a Patchwork of
Natural Dyed Silk Fabrics

43" x 41"

INR 1,10,000 /-



Santalum

Rabari Hand Embroidery
over Jat Embroidered Patchwork



43" x 56"

INR 1,40,000 /-

Karsaka:
Farmer

Sujni Hand Embroidery
over Patchwork

32" x 42"

INR 1,00,000 /-



Hunza

Rabari Hand Embroidery
over Eco-Print Patchwork

43" x 42"

INR 1,10,000 /-



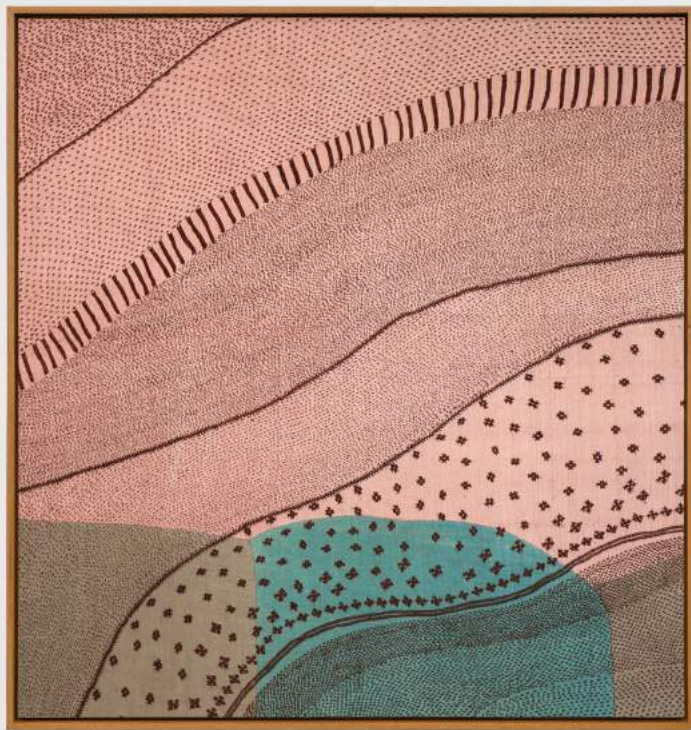
Fuyu

Rabari Hand Embroidery

over Patchwork

41" x 39"

INR 1,00,000 /-



Yognidra: Deep Relaxation and Meditation

Rabari Hand Embroidery
over Patchwork

20" x 20"

INR 45,000 /-

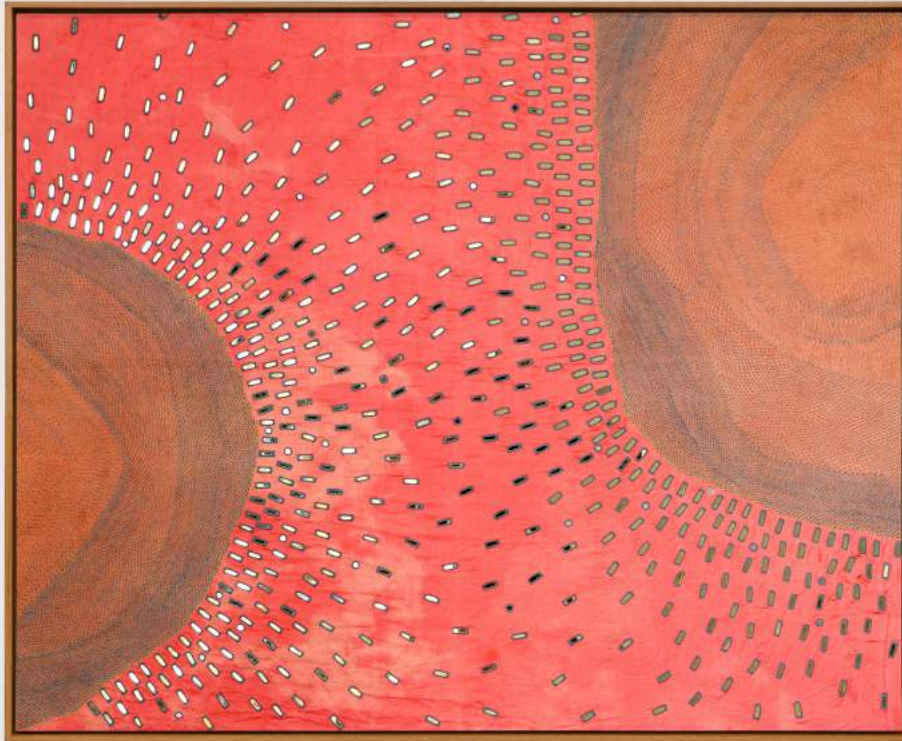


Sumakha: Joyous Festival

Rabari Hand Embroidery
and Mirror Work

42" x 52"

INR 1,50,000 /-



Puran: Old Traditional History

Rabari Hand Embroidery

20" x 20"

INR 40,000 /-





Suragga: Vermillion

Rabari Hand Embroidery
on a Patchwork of
Bela Block Print Fabric

65" x 43"

INR 1,60,000 /-

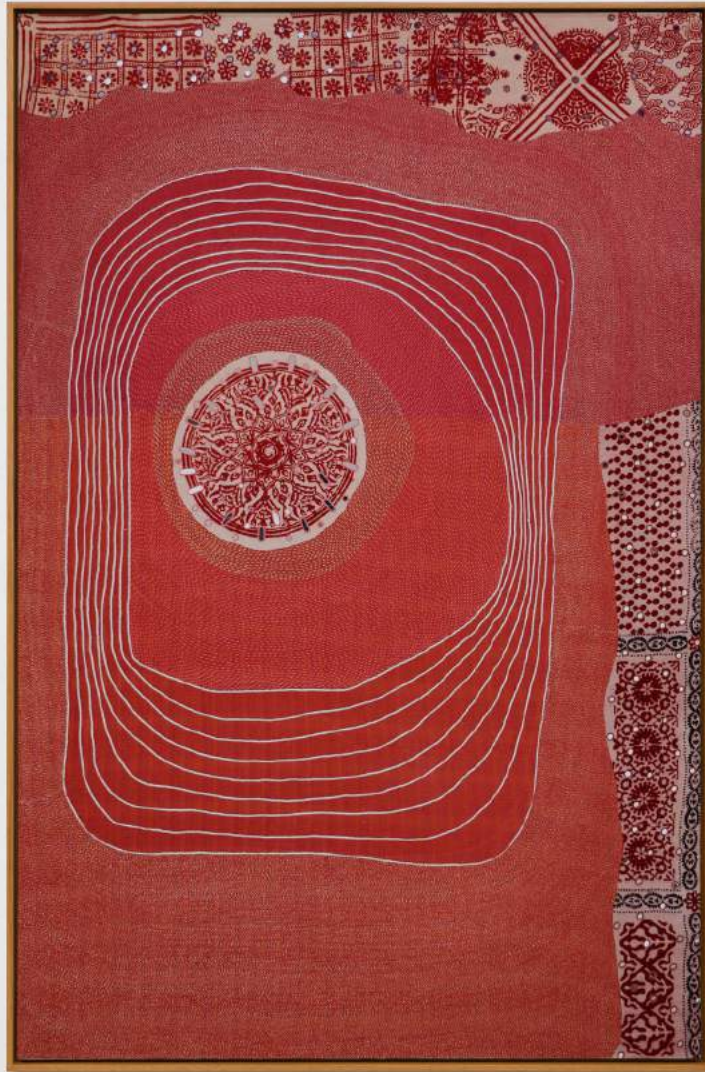


Samutsava: Great Festival or Festivity

Rabari Hand Embroidery
on a Patchwork of
Bela Block Print Fabric

66" x 42"

INR 1,60,000 /-



Amnaya: Sacred Tradition

Rabari Hand Embroidery
on a Patchwork of
Bela Block Print Fabric

66" x 42"

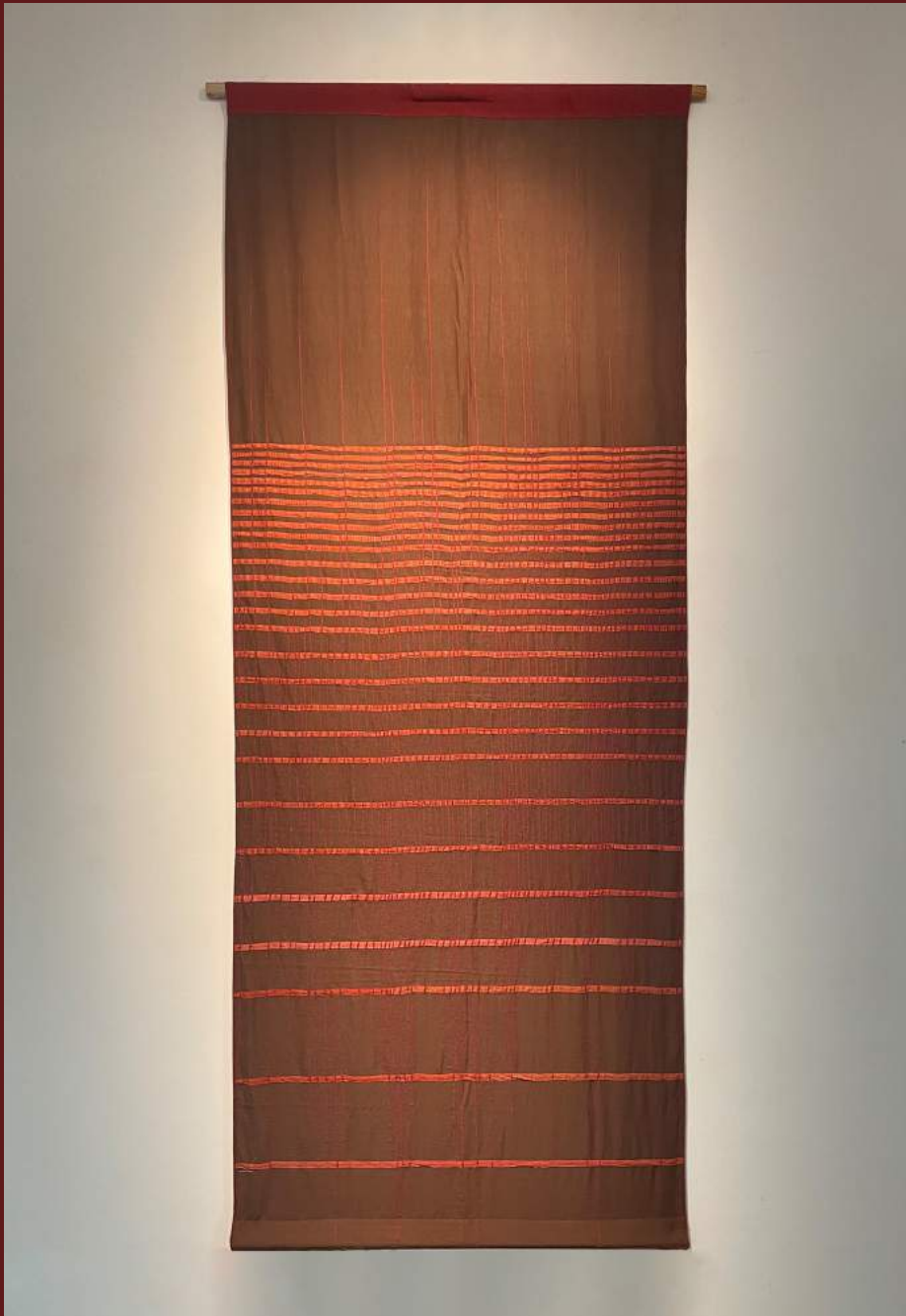
INR 1,50,000 /-

Vakush

Rabari Hand Embroidery
over Upcycled Fabric Woven Strips

110" x 40"

INR 1,25,000 /-





Majjarl

Rabari Hand Embroidery
over Upcycled Fabric Woven Strips

110" x 40"

INR 1,25,000 /-

Nimrukti:

Sunset

Rabari Hand Embroidery

over Patchwork

44" x 51"

INR 1,30,000 /-



bougainvillea
the creative veranda

x

Tao
The way to Art

A2, Vaibhav Apartments,

Opp. Samarpan Flats,

Gulbai Tekra, Ahmedabad

+91 98240 76676

info@bougainvillea.gallery

165, The View,

Dr Annie Besant Road,

Worli, Mumbai – 18

+91 (22) 2491 8585 / 8686

info@taoartgallery.com

* 12% GST applicable